

RELINQUISHMENT REPORT
8126/38-42 (Han_North 38-42),
Tiuraselkä occurrence

by
Tiia Kivisaari

29.9.2014

RELINQUISHMENT REPORT

DOCUMENTATION PAGE

Kohteen nimi: Tiuraselkä	Malminetsintäluvan tunnus: 8126/38-42 (Han_North 38-42)
Raportin tekijä/tekijät: Tiia Kivisaari, Chief Geologist of Hannukainen	Luvan haltija(t): Northland Mines Oy
Raportin otsikko: RELINQUISHMENT REPORT 8126/38-42	
Tiivistelmä: <p>Tiuraselkä study area (claims 8126/38-42) is located in Western Lapland in southern part of the Muonio municipality; about 35 km southeast of the municipal center and seven kilometers northwest of the Äkäslompolo, Ylläs skiing resort in Kolari (map sheets U4241E&G). All waterways in the region are within the Torne River–Muonio River Natura 2000 Site (FI301912, SCI). The Natura designation covers the water systems of the Torne and Muonio rivers and there is no land included in the designation. At the nearest, 3 km toward east of the study area locates the Ylläs-Pallas National park (KPU120022).</p> <p>The claims in Tiuraselkä were applied to carry out exploration for the commodities copper, gold, and iron. The claims 8126/38-42 (Han_North 38-42) were granted for Northland Mines Oy on March 20, 2006. The area comprised 480 hectares. Claims were relinquished after eight years validity.</p> <p>Tiuraselkä target is located some eight kilometers NNE from the Kuervitikko deposits. Tiuraselkä occurs in the same Rautuvaara Formation and the same thrust zone as Hannukainen and Kuervitikko deposits.</p> <p>Only reconnaissance study and geological mapping were carried out in claim 8126/38-42. Twenty historical drill holes have been drilled to the target. The old logs indicate sequence with highly kaolinized skarns and locally limonite and goethite-rich parts that may represent intensely weathered magnetite skarns. The old logs indicate that magnetite-rich (ore) sequences are sparse. Further, field evidence i.e. geological mapping did not reveal any magnetite rich rocks.</p> <p>As the company has not proceeded with the exploration in the area, it decided to relinquish the claims.</p>	
Sivumäärä: 2 pages	Liitetiedostojen lukumäärä nimineen: 2 attachments <ul style="list-style-type: none"> • 8126_2_20140929 (mapping data) • 8126_Map_20140929
Kirjallisuusviitteet: -	
Luvan haltijan yhteystiedot: Northland Mines Oy, Asematie 4, 95900 Kolari tkivisaari (a) northland.eu	
Päiväys: 29.9.2014	
Raportoijan allekirjoitus ja nimen selvennys: <p style="text-align: center;">Tiia Kivisaari</p>	

CONTENTS

- 1 Introduction.....1
- 1.1 Location1
- 1.2 Property status1
- 2 Work carried out.....2
- 2.1 Geological mapping.....2
- 3 Exploration results.....2
- 4 Conclusions.....2

1 INTRODUCTION

1.1 Location

Tiuraselkä study area (claims 8126/38-42) is located in Western Lapland in southern part of the Muonio municipality; about 35 km southeast of the municipal center and seven kilometers northwest of the Äkäslompolo, Ylläs skiing resort in Kolari. Secondary highway 940 'Äkäslompolontie' bypasses the area in the north and the claims are accessible from the road, as well as via forest drive paths. The most of the claims locates on map sheets U4241G and minor part on U4241E, using UTM sheet line system.

All waterways in the region are within the Torne River–Muonio River Natura 2000 Site (FI301912, SCI). The Natura designation covers the water systems of the Torne and Muonio rivers and there is no land included in the designation. At the nearest, about three kilometers toward east of the study area locates the Ylläs-Pallas National park (KPU120022).

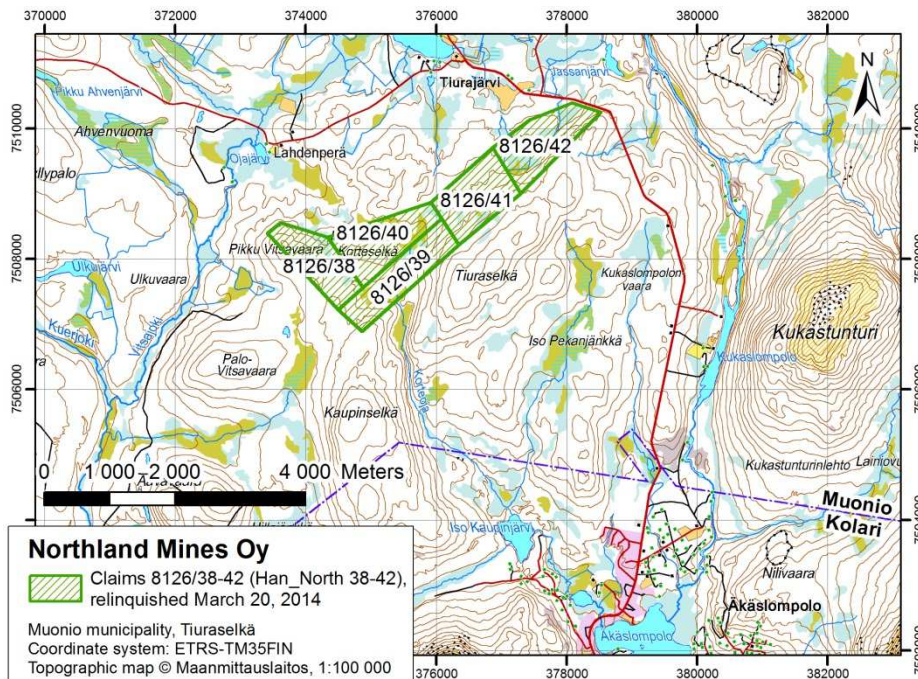


Figure 1. Location of the Tiuraselkä study area including claims 8126/38-42 (Han_North 38-42).

Tiuraselkä target is located some eight kilometers NNE from the Kuervitikko deposits. Tiuraselkä occurs in the same Rautuvaara Formation and the same thrust zone as Hannukainen and Kuervitikko deposits. On aeromagnetic maps, Tiuraselkä show up as a SSW-NNE oriented scattered ribbon of positive anomalies within a space of about 3 km. Based on the historical logs, the bedrock in the Tiuraselkä area consists of deeply weathered rocks similar to the skarns at Fe-occurrences south from Tiuraselkä.

1.2 Property status

The claims in Tiuraselkä were applied to carry out exploration for the commodities copper, gold, and iron. The claims 8126/38-42 (Han_North 38-42) were granted for Northland Mines Oy on March 20, 2006 for five years (Table 1). The area comprised 480 hectares. Claims remained in effect after the first five years due to submitted mining concession K8126 for Hannukainen in 2010 (Mining Act 503/1965, 21§). Major part of the claims with mining registry number 8126 is within the applied concession area. In 2014, company decided to relinquish the Tiuraselkä claims after eight years validity.

Table 1. Property status of Tiuraselkä claims 8126/38-42 (Han_North 38-42)

Mining Registry #	Name	Owner	Applied	Granted	Expiry Date	Area (ha)
8126/38	Han_North 38	Northland Mines Oy	7-Feb-2006	20-Mar-2006	20-Mar-2014	82.9
8126/39	Han_North 39	Northland Mines Oy	7-Feb-2006	20-Mar-2006	20-Mar-2014	99.5
8126/40	Han_North 40	Northland Mines Oy	7-Feb-2006	20-Mar-2006	20-Mar-2014	99.6
8126/41	Han_North 41	Northland Mines Oy	7-Feb-2006	20-Mar-2006	20-Mar-2014	98.7
8126/42	Han_North 42	Northland Mines Oy	7-Feb-2006	20-Mar-2006	20-Mar-2014	99.8

2 WORK CARRIED OUT

Only reconnaissance study and geological mapping were carried out at claim 8126/38-42. The coordinate system used in this exploration program was Finnish KJ Zone 2. In the digital records forwarded to Mining Authority, the data is converted to coordinate system ETRS-TM35FIN.

2.1 Geological mapping

Bedrock mapping and boulder hunting was carried out in the summer of 2006. Total of 17 observations were made within and immediate vicinity of the claims. No samples were sent to analysis. The observations included gneisses, granites, skarns and skarn gneisses (Figure 2). Ore indicators were absent with only minor magnetite observed.

Geological mapping data is in the attached data files.

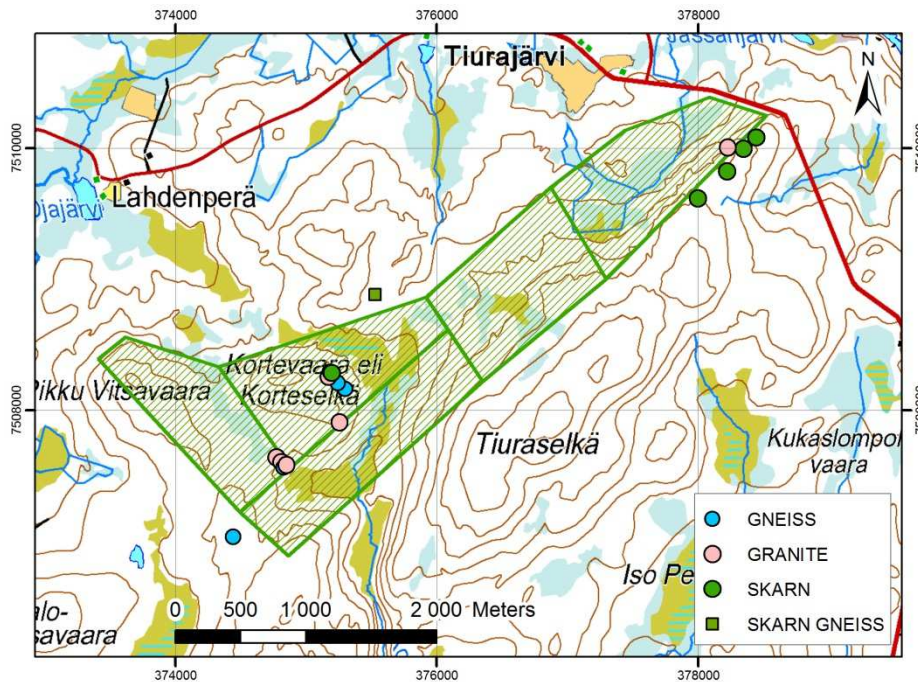


Figure 2. Location of the mapping observations and rock types. Topographic map © Maanmittauslaitos, 1:100 000.

3 EXPLORATION RESULTS

Historical drilling data from study areas was collected and twenty historical drill holes have been drilled to the target. However, no assay data exists from them (not even in old logs). Based on the old logs, the bedrock in the Tiuraselkä area consists of deeply weathered rocks similar to the skarns at Fe occurrences south from Tiuraselkä. The old logs indicate sequence with highly kaolinized skarns and locally limonite and goethite-rich parts (that may represent intensely weathered magnetite skarns etc.). The old logs indicate that magnetite-rich (ore) sequences are sparse. Further, field evidence i.e. geological mapping did not reveal any magnetite rich rocks.

4 CONCLUSIONS

As the company has not proceeded with the exploration in the area, it decided to relinquish the claims.